



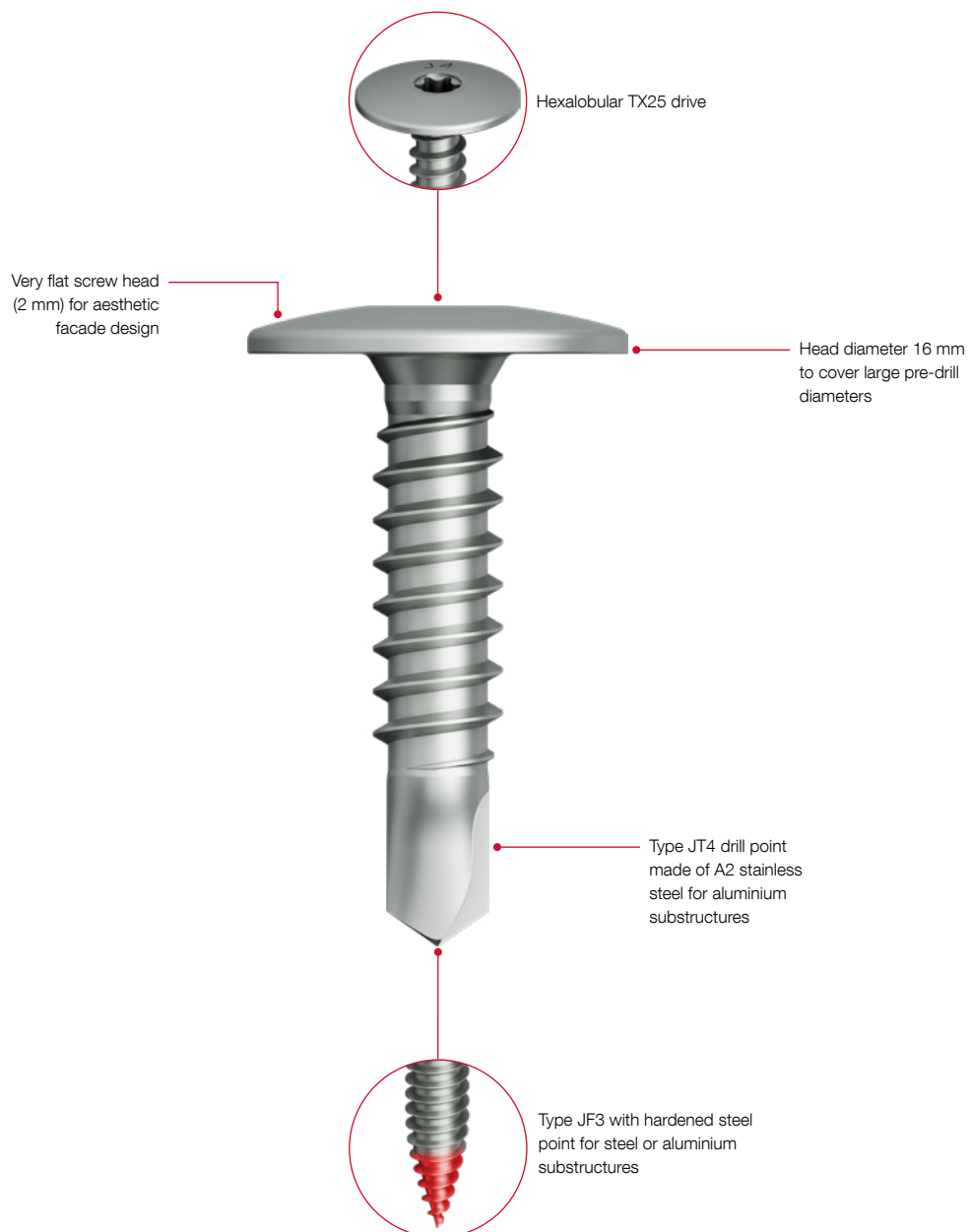
LT system classic

The classic solution for the visible fastening of rainscreen facade claddings

LT system classic

Forcing tension under control: The LT fastening system classic with plastic grommets specifically matched to the screws ensures optimum fastening of the facade claddings.

The LT screws can be combined with suitable centring bushes – adapted to every application. Completely removable for an unmixed separation of the used materials.



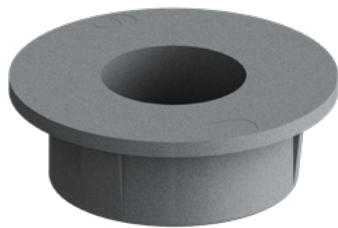


Detail view of fixed point for LT system classic



Detail view of sliding point for LT system classic

LT centring grommets to form fixed points



Thin grommet edge protects panel surface from scratches

Centring hole on grommet base positions screws precisely in the centre of the panel hole (11 mm)

Thin grommet edge protects panel surface from scratches



LT centring grommets to form fixed points

Centring hole on grommet base positions screws precisely in the centre of the panel hole (11 mm)



LT/STS Tool plastic

LT system classic selection aid



Screw type	JT4-LT-3-5.5x25 KD16	JT4-LT-3-5.5x25 KD16	JT4-LT-3-5.5x25 KD16
Material	A2 stainless steel	A2 stainless steel	A2 stainless steel
Application	In agreement with cladding manufacturer	In agreement with cladding manufacturer	In agreement with cladding manufacturer
Approval by cladding manufacturer	Z-14.4-851 PURICELLI	Z-14.4-851 PURICELLI	Z-14.4-851 PURICELLI
Strip-proof	No ¹⁾	No ¹⁾	No ¹⁾
Substructure	Aluminium	Aluminium	Aluminium
Drilling capacity (t_i pre-drilled) [mm]	3.0	3.0	3.0
Clamping thickness t_{fix} [mm]	4.0	6.0	8.0
EJOT proof of usability	-	-	-



LT grommet for fixed points (F)

Centring grommet Ø11/4 F Centring grommet Ø11/6 F Centring grommet Ø11/8 F



LT grommet for sliding points (S)

Centring grommet Ø11/4 S Centring grommet Ø11/6 S Centring grommet Ø11/8 S

¹⁾ Screws without free spin zone must be loosened by a quarter turn after connecting surface in order to ensure reliable sliding.



**JF3-
LT-2-5.5x30
KD16**

**JF3-
LT-2-5.5x30
KD16**

**JF3-
LT-2-5.5x30
KD16**

**JT4-
LT-2/6-6x50
KD16**

**JT4-
LT-2/6-6x50
KD16**

**JT4-
LT-2/6-6x50
KD16**

A2 stainless steel
with hardened
steel point

A2 stainless steel
with hardened
steel point

A2 stainless steel
with hardened
steel point

A2 stainless steel

A2 stainless steel

A2 stainless steel

In agreement with
cladding manufacturer

In agreement with
cladding manufacturer

In agreement with
cladding manufacturer

In agreement with
cladding manufacturer

In agreement with
cladding manufacturer

In agreement with
cladding manufacturer

–

–

–

Z-14.4-851
PURICELLI

Z-14.4-851
PURICELLI

Z-14.4-851
PURICELLI

No¹⁾

No¹⁾

No¹⁾

yes

yes

yes

Steel / Aluminium

Steel / Aluminium

Steel / Aluminium

Timber / Aluminium

Timber / Aluminium

Timber / Aluminium

3.0

3.0

3.0

1.5–2.0

1.5–2.0

1.5–2.0

4.0

6.0

8.0

4.0

6.0

8.0

ETA-10/0200
Z-14.4-901

ETA-10/0200
Z-14.4-901

ETA-10/0200
Z-14.4-901

ETA-10/0200

ETA-10/0200

ETA-10/0200



Centring grommet
Ø11/4 F



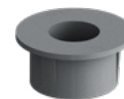
Centring grommet
Ø11/6 F



Centring grommet
Ø11/8 F



Centring grommet
Ø11/4 F



Centring grommet
Ø11/6 F



Centring grommet
Ø11/8 F



Centring grommet
Ø11/4 S



Centring grommet
Ø11/6 S



Centring grommet
Ø11/8 S



Centring grommet
Ø11/4 S



Centring grommet
Ø11/6 S



Centring grommet
Ø11/8 S



EJOT SE & Co. KG

Market Unit Construction

In der Stockwiese 35

57334 Bad Laasphe · Germany

T +49 2752 908-0

F +49 2752 908-731

construction@ejot.com

www.ejot.com/construction